



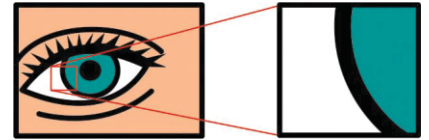
Creative Promotional Solutions

ART GUIDELINES

503-347-9338
art@1525.co

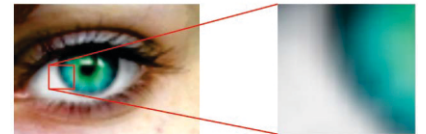
VECTOR ARTWORK

Vector artwork is digitally created with shapes, lines, curves, or paths that can be easily colored, manipulated, and resized without affecting the quality of the image.



RASTER ARTWORK

Raster Artwork is digitally created using pixels. Quality of a raster image can be negatively affected by being re-colored, manipulated and/or resized.



ACCEPTABLE ARTWORK - VECTOR



Please convert all fonts to outlines or curves before submitting artwork. Note that script fonts will also need to be welded. If color changes are needed, please provide PANTONE colors, or CMYK values.

Please submit raster art for reference with vector art files. This allows us to be certain that your vector file has opened correctly.

ACCEPTABLE RASTER ARTWORK



Please provide artwork with a resolution of at least 300 dpi at actual size. This can vary with the actual process so if unsure, please call to confirm. Avoid using images from the internet as most are too low a resolution for a quality imprint.

Please note: Due to limitations in four color process printing, color matching is not always 100% attainable when creating the final product.

Full Service Art Department

1525 has a full service art department. Artwork is billed at \$50.00 per hour and is quoted on a project basis.